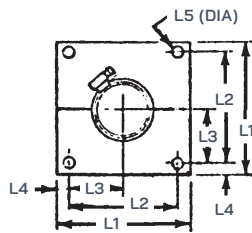


**Dual, Fixed**

T/L Size	Catalog Number	L1	L2	Approx. Weight
3 1/8"	370-035	3 5/32"	5 1/2"	2 lbs

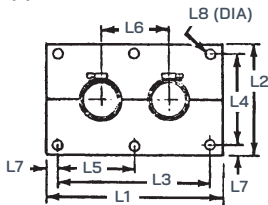
Supports single line at point of entry through wall. One anchor required on each side of wall. Mounting bolts not supplied.



**Single Horizontal Anchor**

T/L Size	Catalog Number	L1	L2	L3	L4	L5	Approx. Weight
1 5/8"	270-028	6"	4 7/8"	2 7/16"	9/16"	9/16"	2 lbs
3 1/8"	370-028	8"	6 7/8"	3 7/16"	9/16"	9/16"	4 lbs
4 1/16"	470-028	9"	7 3/4"	3 7/8"	5/8"	9/16"	5 lbs
6 1/8"	670-028	11 3/4"	10 1/4"	5 1/8"	3/4"	9/16"	15 lbs
7 3/16"	770-028	16"	13 1/2"	6 3/4"	1 1/4"	3/4"	34 lbs
8 3/16"	870-028	16"	13 1/2"	6 3/4"	1 1/4"	3/4"	32 lbs
9 3/16"	970-028	16"	13 1/2"	6 3/4"	1 1/4"	3/4"	29 lbs

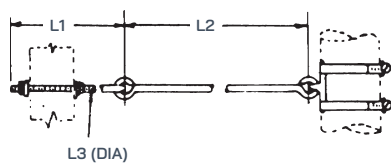
Supports two lines at point of entry through wall. One anchor required on each side of wall. Mounting bolts not supplied.



**Dual Horizontal Anchor**

T/L Size	Catalog Number	L1	L2	L3	L4	L5	L6	L7	L8	Approx. Weight
1 5/8"	270-029	9 3/4"	6"	8 5/8"	4 7/8"	4 5/16"	3 3/4"	9/16"	9/16"	4 lbs
3 1/8"	370-029	13 1/2"	8"	12 3/8"	6 7/8"	6 3/16"	5 1/2"	9/16"	9/16"	7 lbs
4 1/16"	470-029	14 1/2"	9"	13 1/4"	7 3/4"	6 5/8"	6 1/2"	5/8"	9/16"	8 lbs
6 1/8"	670-029	22"	11 3/4"	20 1/2"	10 1/4"	10 1/4"	10 1/4"	3/4"	9/16"	30 lbs

Mounts through single hole. Complete with two hose clamps. Used to restrict lateral motion of line while permitting vertical and horizontal movement.



**Lateral Braces**

T/L Size	Catalog Number	L1	L2	L3	Approx. Weight
3 1/8"	370-038	7 3/4"	38 3/4"	3/8"	2 lbs
4 1/16"	470-038	7 3/4"	38 3/4"	3/8"	3 lbs
6 1/8"	670-038	7 3/4"	38 3/4"	3/8"	2 lbs
7 3/16"	770-038	7 3/4"	38 3/4"	3/8"	4 lbs
8 3/16"	870-038	7 3/4"	38 3/4"	3/8"	4 lbs
9 3/16"	970-038	7 3/4"	38 3/4"	3/8"	4 lbs